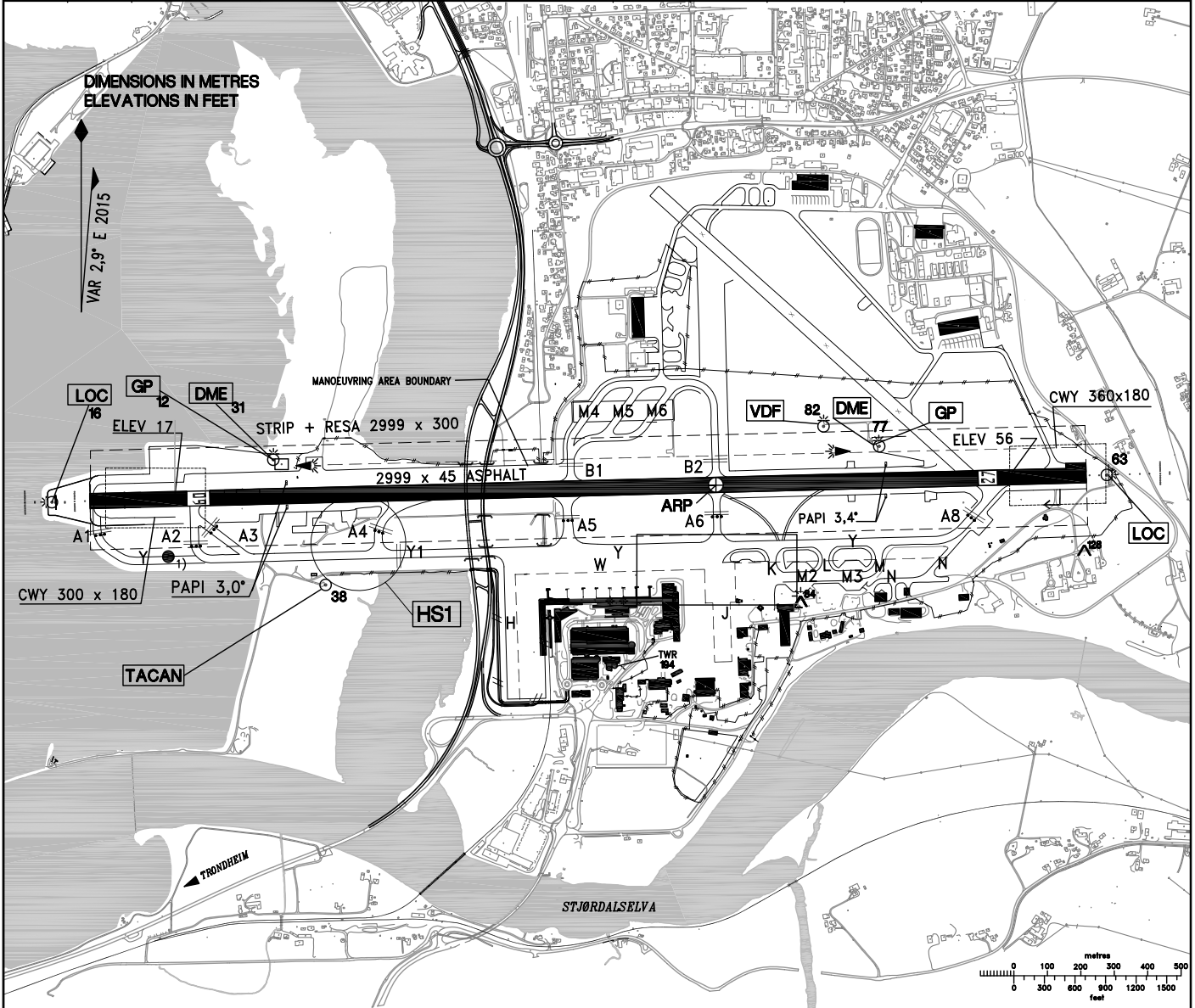


<b>AERODROME CHART</b>		63°27'27"N 010°55'27"E WGS 84		<b>AD ELEV</b> 56 FT	<b>ATIS 127.550 MHZ</b> <b>GND 121.600 MHZ</b> <b>TWR 119.400 MHZ</b>		<b>TRONDHEIM</b> <b>VÆRNES</b> NORWAY		
RWY	BRG (GEO)	THRESHOLD		BEARING STRENGTH	DECLARED DISTANCES				TWY AND APRON
					TORA	ASDA	TODA	LDA	
09	090.21°	632727.55 N	0105329.32 E	PCN-50/F/A/X/U	2699	2699	3059	2446	TAXIWAYS NORTH OF ARP: TWY B1 23M, B2 20M LEADING TO MIL.APRON: ASPH, PCN-40 F/B/X/U.
27	270.25°	632727.22 N	0105630.91 E	PCN-50/F/A/X/U	2699	2699	2999	2469	

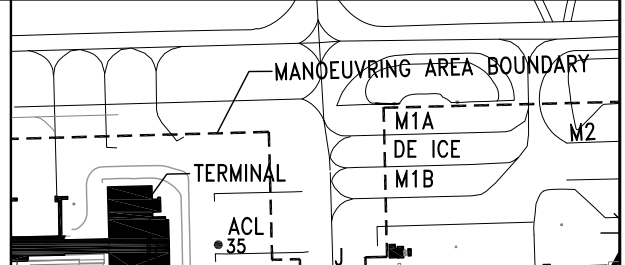


**NOTES-REMARKS**

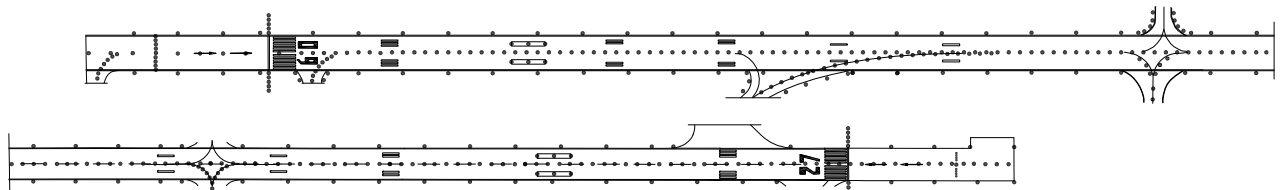
- 1) ENGINE TESTING AREA.
- MANOEUVRING AREA ON RWY SIDE OF BROKEN LINE
- BRIDGES ON TAXIWAYS: OVER RAILWAY AND MOTORWAY
- ON TWY Y BTW TWY A4 AND A5: WIDTH 40m - CURB HEIGHT 40cm.
- REDUCED (ALTERNATE) TKOF PSN REF AD 2.13
- THR GEOD UNDULATION 127 FT
- OBST PENETRATE CLEARANCE SFC N OF RCL APPROX 1,1 NM, AND S OF RCL APPROX 5 NM FM THR 27.
- SEQUENCED FLASHING LGT ON CL RWY 27 FROM 480M TO 240M FROM THR.
- WHITE, FLASHING LIGHT INDICATES START OF APPROACH LIGHTS.

**RUNWAY INCURSION HOTSPOTS**

**HS1** ANGLED TWY. DIFFICULT TO SEE TRAFFIC ON FINAL RWY 09.



**LIGHTING AND MARKING AIDS RWY 09/27 AND EXIT TWY**



RWY	APCH	THR	PAPI	RWY CL	EDGE	END RWY	APCH	THR	PAPI	RWY CL	EDGE	END	
09	W CL/XBAR LIH	G LIH	3,0° MEHT 52FT	2446M/15M W	1846M W/600M Y LIH	R LIH	27	W CL/XBAR LIH	G LIH	3,4° MEHT 56FT	2469M/15M W	1869M W/600M Y LIH	R LIH

CHANGES: MANOEUVRING AREA BOUNDARY AND EDITORIAL.